

# Capability Statement



NovelEolutions  
Engineering | Environment | Earth

## ABOUT US

NovelEolutions, Inc. (NovelE) offers a full range of turnkey environmental engineering and consulting services utilizing innovative, but proven technologies, while maintaining a high level of client care. Personalized attention allows our customers to trust NovelE with competent completion of environmental services at an expedited rate.

NovelE has the varied experience and expertise to streamline implementation of our environmental projects creating a “well-oiled machine” for our clientele. Our business model is based on sustainability in the products that we use, the people that we partner with and the strategies that we utilize. The key to NovelE’s success is our staff’s dedication to ethics and principles leading our clients to cost-effective solutions for their environmental needs. NovelE’s average staff technical experience is over 20 years.

*Source Removal, Moore Haven, FL*





# COMPANY SNAPSHOT

Founded: 2015

Headquarters: Tampa, FL

CAGE Code: 7FBU0

DUNS Number: 07-974-8140



## QUALIFIED NAICS CODES

### Primary

541330 Engineering Services

### Secondary

237110 Water and Sewer Line and Related Structures  
Construction

238990 All Other Specialty Trade Contractors

541310 Architectural Services

541340 Drafting Services

541360 Geophysical Surveying and Mapping Services

541611 General Management and Administrative

541620 Environmental Consulting Services

541690 Other Scientific and Technical Consulting Services

541715 Research and Development in the Physical,  
Engineering, and Life Sciences (except Nanotechnology  
and Biotechnology)

541720 Research and Development in the Social Sciences and  
Humanities

541990 All Other Professional, Scientific, and Technical Services

562910 Remediation Services

611430 Professional and Management Development Training



## BUSINESS POINT OF CONTACT

Liza Grudin, PE, ME, ENV SP |  
President

Email: [liza.grudin@novelEolutions.com](mailto:liza.grudin@novelEolutions.com)

Phone: 239.220.4138

Founder of NovelE



## PROJECT HIGHLIGHT USACE, LOUISVILLE DISTRICT

NovelE conducted surface water sampling to support the Water Quality Team objectives of the Louisville District Water Quality Program. NovelE was contracted by the U.S. Army Corps of Engineers (USACE), Louisville District, to complete work activities including aquatic physical/chemical/biological data and sample collection, quality control, and reporting at 20 District reservoirs spanning from Ohio to Kentucky to Indiana. This was a competitive Small Business Award to NovelE as Prime Contractor.

### *PROJECT BY THE NUMBERS*

Acres of Reservoirs Sampled: 84,630

pH Readings Collected: 3,577

Total Data Readings: 71,540

Zoological samples collected: 285

Total Water Samples collected: 2,626

Louisville District called this an “excellent sampling season!”



## Certified Business Enterprise

NovelE welcomes the opportunity to become a part of your environmental management team. As an SDB, we are in a key position to provide engineering and field support to your team. We can also form partnerships with engineering and consulting firms that may require the expertise of our exceptional staff.

- o Small Business Administration **8(a)** Business Development Program
- o Economically Disadvantaged Women Owned Small Business (**EDWOSB**)
- o FDOT Disadvantaged Business Enterprise (DBE) Unified Certification Program (UCP)
- o State of Florida Office of Supplier Diversity and City of Orlando WBE
- o Hillsborough County, City of Tampa WBE and Small Business Enterprise (SBE)
- o Port Tampa Bay and South Florida Water Management District SBE



## PROJECT HIGHLIGHT

# CCAFS Landfill Environmental Compliance

### USACE, Mobile District

NovelE was hired as a subcontractor to this U.S. Army Corps of Engineers (USACE), Mobile District project to provide FY17 Landfill Compliance Services for the 45<sup>th</sup> Space Wing (45 SW) at Cape Canaveral Space Force Station (CCSFS).

NovelE worked closely with the United States Air Force (USAF) and USACE to bring the landfill into compliance. Historical research indicated that the landfill had not been in compliance for some time. An incorrect hydrogeologic evaluation by the previous consultant provided recommendation for background sampling. NovelE corrected the groundwater flow and decreased the scope of work required for compliance.

Core services by NovelE's Hydrogeologist, Field Geologist and Environmental Technicians include well redevelopment and rehabilitation, groundwater sampling, aquifer testing, hydrogeologic modeling, and GIS mapping. An Aquifer Performance Test Plan was accepted without comment by USACE, Mobile District.

Aquifer testing was conducted to evaluate the entire landfill complex. This data will be utilized to support an Investigation Phase Report and Optimization Plan outlining next steps for the landfill compliance.



*Aquifer Testing, Cape Canaveral Space Force Station, Brevard County, FL*





## PROJECT HIGHLIGHT PATRICK AIR FORCE BASE SPILL BUCKET CLOSURE

NovelE provided geologic and engineering oversight for this regulatory petroleum storage system closure at the AAFES Gas Station located at Patrick Air Force Base (PAFB) in Brevard County, Florida. The scope of work included integrity testing and closure of four (4) Spill Buckets at AAFES Gas Station on Patrick Air Force Base with soil sampling, source removal, soil assessment, and regulatory reporting.

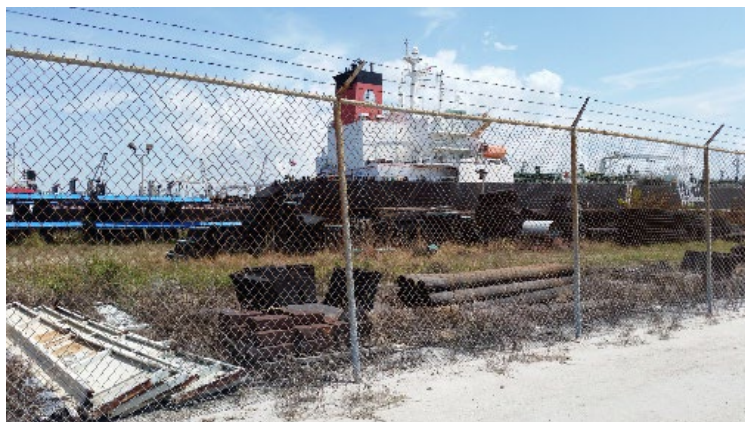
NovelE's key teaming partner, Petroleum Resources & Development (PR&D) conducted closure activities, consisting of replacement of four spill buckets (#1 through #4) corresponding to the four onsite USTs and four 18-inch round manholes for the interstice probe access. Sampling was conducted in accordance with the FDEP SOPs with instruments calibrated in accordance with the manufacturer's instructions.

A total of 800 pounds of petroleum impacted pea gravel was transported to the AOTC facility in Cocoa, Florida.



## Core Services

- Construction and Facility Support Services
- Contamination Assessment and Remediation
- Engineering
- Environmental Compliance
- Hazardous Waste
- Natural Resources
- Occupational Health and Industrial Hygiene
- Solid Waste
- Water Resources



## Select Core Service Details

### WATER SUPPLY DEVELOPMENT

- Wellhead Protection Zone Determinations
- Groundwater Supply Planning
- Aquifer Storage and Recovery
- Well Field Design
- Groundwater Source Identification
- Consumptive Use Permitting
- Aquifer Performance Testing
- Borehole Geologic and Geophysical Logging
- Impact Analysis
- Safe-Yield Analysis
- Consumptive Use Permitting
- Groundwater Modeling
- Well Abandonment

### CONSTRUCTION

- Site Safety and Health Officer
- Quality Control
- Construction Engineering Inspections (CEI)
- Horizontal Construction (PR&D-NovelE JV)
- Vertical Construction (PR&D-NovelE JV and NovelE QRI JV)

### DIFFERENTIATORS

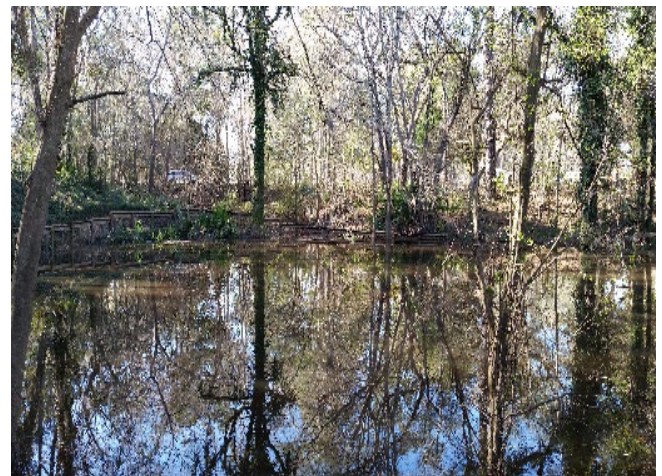
- 30+ Years' Experience in Hydrogeology
- Average staff technical experience >20 years
- Client Focused
- SBA certified 8(a) and EDWOSB
- OSHA HAZWOPER & API Trained
- Zero OSHA Reportable Injuries and Illnesses
- Results Oriented

### PERMITTING

- Mining and Construction Dewatering
- Injection Well Design & Permitting
- Aquifer Exemptions
- Groundwater Flow Modeling
- Consumptive Use Permitting
- NPDES
- Industrial Wastewater

### ENVIRONMENTAL CONTAMINATION

- Due Diligence
- NEPA
- CERCLA / RCRA / CWA Compliance
- Hazardous Materials and Waste Assessment
- Contamination Assessment & Remediation
- Fate and Transport Modeling
- Exposure and Risk Assessment
- Alternative Cleanup Target Levels
- Soil Management Planning
- Operation and Maintenance
- Monitoring



## PROJECT HIGHLIGHT



### USVA BAY PINES HEALTHCARE SYSTEM

NovelEolutions, Inc. (NovelE) is the Engineer-of-Record and Geologist-of-Record to the United States Department of Veteran's Affairs for environmental consulting services at their Bay Pines Healthcare System. The Bay Pines Healthcare system consists of 9 facilities along the western coast of Florida.

**NovelE is a key named subcontractor on the initial 5-year, \$4.16 million IDIQ to ACT Safe, LLC, a SDVOSB and the follow on \$5M contract awarded in March 2022.**

### *PLANNING, PERMITTING, COMPLIANCE AND CONTAMINATION ASSESSMENT BAY PINES FACILITY, BUILDING 40*

NovelE expedited the assessment of two discharges from 2016 and 2017 to close out contamination issues at the site. A comprehensive network of soil borings and monitoring wells were installed to assess petroleum impacts in the vicinity of the aboveground storage tank (AST) utilized for storage of diesel for one onsite generator. The Site Assessment activities were completed within one year of notice to proceed and free product removal is being conducted monthly as an Interim Source Removal under Chapter 62-780, FAC.

### *BAY PINES FACILITY, MENTAL HEALTH BUILDING*

Historical removal of underground storage tanks (USTs) resulted in petroleum contamination of soil and groundwater near the new Mental Health Building. A risk-based closure option, RMO II under Chapter 62-780, FAC was recommended and approved by Pinellas County-DOH to bring this 2013 discharge to a rapid No Further Action (NFA) status.

### *SPILL PREVENTION CONTAINMENT AND COUNTERMEASURE PLAN (SPCCS)*

NovelE is the Engineer-of-Record for modifications and updates to the existing Spill Prevention and Control and Countermeasure (SPCC) plan for the 337-acre Bay Pines VA Healthcare facility and 30-acre Lee County facility. The Environmental Protection Agency (EPA) requires commercial facilities with aboveground petroleum storage systems to maintain a SPCC plan. A SPCC plan is designed to protect public health, public welfare, and the environment from potential harmful effects of oil/petroleum discharges to navigable waters and adjoining shorelines. The five-year review conducted by NovelE provided corrections to tank information, facility locations, and updates to the overall facility infrastructure.



**Contract:** 36C24818D0152

## PROJECT HIGHLIGHT

# United States Department of Agriculture

NovelE provided tank closure services for the USDA ARS Field Station in Canal Point, Florida. Ms. Grudin served as the Engineer-of-record and Mr. Pitts served as the field specialist for this project. Two 2,000-gallon aboveground storage tanks (ASTs) were removed from the site within 30 days of Notice to Proceed and one 500-gallon Convault AST was delivered within 60 days of NTP. Soil borings and a temporary well were installed for assessment of environmental impacts. Tank closure was documented in a formal submittal and no further assessment was approved with no regulatory comments.

This project was an 8(a) sole source award to NovelE.

**Contract:** AG-32SC-P-17-0548, \$62,440



## CLIENT HIGHLIGHT

### Florida Department of Environmental Protection (FDEP) Petroleum Restoration Program (PRP)

NovelE provides subcontracted environmental engineering, field support and consulting services for the assessment and remediation of petroleum impacted sites. Assessment activities include soil boring installation, oversight of piezometer and monitoring well installation, as well as soil, groundwater, and air sampling. System designs include pin piling, LDA, and sheet piling excavations, dewatering, AS/SVE systems, dual phase extraction systems, bioremediation, and chemical oxidation. Field remediation activities include pilot testing for various technologies, remediation well installation oversight, remediation system installation, excavation and sheet piling installation oversight, monthly episodic in situ remediation, operation & maintenance (O&M), and system repair.

**Select Contracts:** GC807, \$198,866, GC751, \$117,444, GC782, \$304,712



## PROJECT HIGHLIGHT

# South Florida Water Management District

NovelEolutions, Inc. (NovelE) provided Prime Contracting services to the South Florida Water Management District (SFWMD) on this key project coordinating with the Florida Department of Environmental Protection (FDEP) for funding. Liza Grudin, PE served as the Engineer-of-Record for this fast-tracked site rehabilitation. Gregory Lee Aumann, Project Geologist, provided the primary field oversight for site activities and report writing. David Haney provided field support for soil and groundwater sampling activities.

Ms. Grudin led the field team on the Phase II Environmental Site Assessment activities conducted at the active grove site before the SFWMD purchased the property in the late 1990's. When asked to manage the formal closure of the discharges at the former maintenance area, she was elated to be brought back in on the project. The adjacent reservoir is a key restoration project for SFWMD with construction of the 170,000 acre-foot Caloosahatchee River (C-43) West Basin Storage Reservoir. This structure will help store and manage basin runoff for meeting estuary needs during the dry season. Estimated for project completion in 2020, the estimate cost is \$500 million.

Site activities include installation of soil borings and monitoring wells with coordinated soil and groundwater sampling to investigate former underground storage tanks (USTs) and aboveground storage tanks (ASTs) at the old maintenance area of the grove. The historical discharges are being funded through the Low Scored Site Initiative (LSSI) program managed by FDEP and funded through the Inland Protection Trust Fund (IPTF). Initial soil and groundwater sampling activities indicate that the site will meet site closure criteria within a few quarters.





### Relevant Services

Planning, Permitting and Compliance  
Contamination Assessment  
Soil Sampling  
Groundwater Sampling  
Risk Management

### Challenges

Minimizing impacts to concurrent active Everglades Restoration operations  
Expedited field activities  
Rugged terrain and sampling conditions



## PROJECT HIGHLIGHT



### Hillsborough Area Transit Authority (HART)

Liza Grudin, PE, Principal Engineer for NovelE, served as the Engineer-of-record, Remediation Lead and Sustainability Lead for the contract providing management and technical support for comprehensive environmental assessment and remediation activities for HART's 19.34-acre maintenance facility. Ms. Grudin developed Work Plans and technical reports and provided third party QA/QC for assessment activities including abandonment of monitor wells and an oil/water separator, installation of soil borings and monitor wells, soil, groundwater and free product sampling, and free product recovery. NovelE was the first onsite providing Emergency Response consulting for an approximate 500-gallon diesel spill and led the Corrective Action investigation to follow. NovelE worked hand-in-hand with HART's Environmental, Project Management Operations, and Facilities Maintenance Departments on AST and RCRA compliance, BMPs, SOPs, and Waste Minimization Plans, staff training, and SPCC and SWPPP documents within the framework of ISO 14001 and HART's internal Environmental and Sustainability Management System (ESMS).



**Contract:** VC-14308C, \$1.7 M

# PROJECT HIGHLIGHT

## CITY OF TAMPA AE SERVICES

NovelE conducted a Phase I Environmental Site Assessment (ESA) on this 0.68-acre property originally developed in the 1940's. Due to an expedited timeframe for closing on the property, the Phase I site walk was conducted on the same day as the Purchase Order (PO) was issued by the client, the City of Tampa. Preliminary information gathered during the Phase I ESA process started in accordance with ASTM E1527-13 identified Recognized Environmental Conditions (RECs) to include the following: A dry cleaning facility located in the southern portion of the site at 102 E Fortune Street in 1969; an Auto Repair Service facility, Accurate Crankshaft located in the southern portion of the site at 114 E Fortune Street in 1949; and a Sign Painting Service on the west side of the property.

Based on identified RECs, NovelE developed a Site Conceptual Model and recommended that a limited Phase II ESA be conducted. The Phase II ESA process was expedited to meet the closing timeframe outlined by the City of Tampa. Phase II ESA field activities were completed **within two (2) business days of the PO issuance**.

Pursuant to the model, NovelE supervised the installation of thirteen (13) soil borings and collection of six (6) soil samples and five (5) groundwater samples. Soil and groundwater sampling were conducted in accordance with all applicable FDEP Standard Operating Procedures (SOPs). Within **six (6) business days of the Purchase Order**, NovelE provided an Executive Summary summarizing the results of the Phase I and Phase II ESA to the City of Tampa team allowing for the property to close on time. Based on the results of the Phase II ESA, installation of a permanent monitoring well was recommended to provide a more definitive evaluation of groundwater quality in this area. Additional assessment is pending a Brownfields application.



# PROJECT HIGHLIGHT

## Citrus Combined Cycle Plant, Duke Energy, Crystal River

NovelE prepared the initial Best Management Practices/Pollution Prevention Plan (BMP3 Plan) for stormwater controls at this newly activated energy plant. The CCC is a natural gas-fired, combined cycle combustion turbine generator (CTG) facility with a total of 1,640 Megawatt (MW) electrical power generating capacity. Four stormwater detention ponds, surrounding the main buildings, are utilized to collect and treat stormwater runoff. An Industrial Wastewater (IWW) Percolation Pond is located northwest of the combined cycle power blocks. Process IWW is treated by an oil/water separator system prior to discharge to the percolation pond. Domestic Wastewater (DWW) is also processed and sent via sumps to the percolation pond. The IWW Percolation Pond contains an emergency overflow structure to isolated wetlands. The percolation pond is designed to contain permitted wastewater flows plus rainfall generated by a 25-year/24-hour storm event. Overall onsite activities encompass approximately 193 acres of the property with the remainder as undeveloped land. The purpose for the development of this BMP3 Plan was to maintain and monitor stormwater discharges at the CCC Station and minimize potential adverse impacts to the onsite and surrounding soil, surface water, groundwater, and ecosystems. This BMP3 Plan consisted of the development and implementation of best management practices, and the establishment of provisions, protocols, and responsibilities for maintaining and monitoring the stormwater at the CCC Station. Ms. Grudin was the Engineer-of-record for the BMP3 Plan and prepared training materials to accompany the new Plan.

**Purchase Order: 6945274**





## PROJECT HIGHLIGHT

# Private Client, Port Tampa Bay Industrial Property Phase I and Phase II Environmental Site Assessments

NovelE conducted a Phase I Environmental Site Assessment (ESA) on this 7-acre property originally developed in the 1960's. Former uses of the property included bulk fuel storage and truck maintenance. A Phase II ESA was conducted to evaluate onsite RECs including the service bays, truck wash area, oil/water separator, and septic tank. Remediation alternatives included Initial Remedial Actions using source removal with closure using Risk Management Option II with engineering and institutional controls. Funding mechanisms for cleanup activities included application of the Brownfields Tax Credit and State of Florida Low-Scored Site Initiative (LSSI).

# PROJECT HIGHLIGHT

## Miami-Dade County Civil and Probate Courthouse

The new Miami-Dade County Civil and Probate Courthouse project will provide more than 600,000 square feet of space and services related to Civil and Probate Divisions of the Eleventh Judicial Circuit Court of Florida, the Clerk of Courts and other related court partners and agencies. The project will include construction of 46 jury courtrooms and shell space for an additional four jury courtrooms; secure parking; site development, including necessary utilities and utility improvements to support the facility; hardscape/landscape; and road and traffic control improvements. The project is being executed under a Public-Private Partnership (P3) delivery model, which provides for the design, construction, financing, operations and maintenance of the courthouse under a single contractual agreement.

NovelEolutions, Inc. (NovelE) provides technical, engineering and construction feasibility support for this County-owned project. The project site was previously a public park with a small parking lot.



The proposed redevelopment plan includes the construction of a Civil and Probate Courthouse with associated amenities. A six-foot deep parking basement will be constructed with a concrete foundation mat approximately 9 feet thick below the basement. The total excavation depth from current grade will be 15 feet bls (-8 NGVD). NovelE conducted the environmental sample collection, analysis and evaluation and incorporated the findings into the Remedial Action Plan (RAP). For this scope of work, the RAP takes the form of a Soil Management Plan (SMP) defining procedures to manage arsenic- and lead-impacted soil and groundwater so construction activities will be protective of human health and the environment. Soil management involves the procedures and processes needed to manage activities in areas where soil may be encountered that exceed the Direct Exposure criteria for Constituents of Concern (COCs) arsenic and lead. Site activities where soils may be encountered include but are not limited to the following: excavation, drilling, digging, grading, utility installation or removal, drainage improvements, road construction, foundation and building construction, and landscaping. Implementation of the SMP includes environmental sample collection of soil, water, and air samples. NovelE provides weekly PE oversight and daily field oversight of the ongoing underground construction activities anticipated to be completed in December 2021.

## PROJECT HIGHLIGHT

# South Florida Water Management District (SFWMD)

The goal of the assessment and source removal activities was to obtain closure of the April 26, 1999 discharge from an aboveground storage tank (AST) within 2 months timeframe. Site activities were conducted at the Segment 3 Pump Station in order to facilitate construction work for the Everglades Restoration Program.

The Segment 3 Pump Station site was a former pump station that had an AST. In June 2021, NovelE supervised excavation activities to include removal of two concrete slabs and 27.61 tons of soil for proper transportation and disposal at the Waste Management Okeechobee Landfill. Mr. Robert Taylor and Mr. Terrence Horan, SFWMD, were onsite to coordinate and supervise the field activities. Both concrete slabs were moved to the south side of the road along a canal that runs north and south.

After the removal of the concrete slabs, NovelE collected soil samples from eight (8) locations starting from the north edge of the smaller concrete slab. The soil samples were collected at approximate 6 foot intervals around the perimeter of the concrete slabs using the excavator bucket. Net OVA readings ranged from 0 to 2.8 parts per million (ppm) in the samples collected from the vadose zone. Four (4) soil samples from the excavation pit were collected and submitted for confirmatory laboratory analysis. Additionally, three monitoring wells were installed and groundwater samples were collected for laboratory analysis. Based on the analysis, the samples met the Soil Cleanup Target Levels (SCTLs) and Groundwater Cleanup Target Levels (GCTLs) as defined by Chapter 62-777, FAC, respectively.

An Interim Source Removal Report was submitted in June 2021. In accordance with Chapter 62-780.680, FAC, No Further Action (NFA) without institutional controls was recommended and approved by the Florida Department of Environmental Protection (FDEP). As a licensed water well contractor, NovelE abandoned the onsite monitoring wells in accordance with the Site Rehabilitation Completion Order (SRCO).



## PROJECT HIGHLIGHT

# Private Client, Siena Cove Development (former Quail Hollow Golf and Country Club)

NovelE provides key engineering and field support on the environmental assessment and remediation activities at this 175-acre former golf and country club set to be redeveloped as a gated community of ±380 single-family residences. In addition to clubhouse and maintenance facilities, the championship golf course consisted of 18 holes and measures approximately 6,800 yards from the professional tees. Preliminary assessment activities are ongoing at the site and include



the use of the incremental sampling methodology (ISM). Mr. Aumann provides field support including soil and groundwater sampling, and aquifer testing. Ms. Grudin is the Engineer-of-record for the remediation activities with an ultimate goal to achieve the necessary approvals from the FDEP resulting in a No Further Action (NFA) status for the property. The regulatory strategy contemplated for this site at the current time will be to seek an alternative closure in accordance with Chapter 62-780, Florida Administrative Code (FAC) using engineering and institutional controls to maintain the aggressive timeline established for this significant redevelopment project by the client. Soil management options include soil blending, capping under roadways, parks/recreational areas, and utilization of clean fill in conjunction with the existing grading plan. Groundwater remediation options include utilization of planned drainage structures, soil amendments and natural attenuation monitoring.

Ms. Grudin completed statistical analysis in coordination with the University of Florida to complete the ISM sampling and assessment approach. In the first of its kind analysis, Ms. Grudin extrapolated the Coefficient of Variation for replicate ISM sampling to single ( $r=1$ ) and duplicate ( $r=2$ ) results. This is a new approach based on FDEP statistical analysis of ISM data resulting in a more accurate determination of onsite impacts. A UCL was then calculated from the resulting extrapolation and compared to the SCTLs for arsenic and dieldrin.

**Private Contract: \$1,000,000+**

# PROJECT HIGHLIGHT



## Private Client

Exxon Sifford's former petroleum station, Vero Beach

NovelE provides environmental consulting services on this former service station developed as a Verizon Wireless. The stakeholders include the former property owner, FDEP delegated local program for the PLIRP eligible release, the insurance company, developer/owner, and Verizon Wireless. Liza Grudin, PE serves as the Engineer-of-Record for this fast-tracked

site rehabilitation in advance of site development. Gregory Lee Aumann, Project Geologist, provides the primary project management and field oversight for site activities.

Three (3) 10,000-gallon underground storage tanks (UST)s storing unleaded fuel taken out of service March 2018 and removed from the site along with three (3) dispenser islands and product transfer piping. One 550-gallon UST, located behind the service bay to the east of the building, was also removed in June 2019. NovelE prepared the scope of services for the removal of the USTs, dispenser islands, and associated piping. The scope of services for construction and tank removal was prepared with sufficient detail to provide for fair and competitive bids from licensed Pollutant Storage System Contractors (PSSCs). All tank removal activities were performed in accordance with standards set forth in the American Petroleum Institute (API) recommended practices and Chapter 62-761, FAC.

Site activities included soil boring installation, monitor well installation, soil excavation, tank removal, and vacuum extraction as an interim remedial action. Staff members Liza Grudin, PE and Greg Aumann used their prior experience with the site dating back to 2001 to manage the multiple discharges and evaluate the site history during the assessment and remediation progress.

## *STAKEHOLDER MANAGEMENT*

Throughout the project, NovelE determined cost allocations between FDEP funding, developer/owner costs, and items that were related to the three open insurance claims for the April 2016 discharge. After review of the insurance correspondence to the new owner, NovelE identified a data gap that ultimately led to coverage of a new release on the property. Upon discovery of a new discharge, NovelE coordinated all discharge reporting, interim source removal and assessment activities and activation of the insurance claim.

### Relevant Services

Planning, Permitting and Compliance  
Emergency Response  
Contamination Assessment | Remedial Design  
Soil and Groundwater Sampling  
Risk Management  
Source Removal and Tank Closure

### Challenges

Minimizing impacts to concurrent active operations  
Expedited field activities  
Management of multiple stakeholders and discharges



# Federal and Municipal Contracting

- A-E Short Selection Database USDA Forest Service, Southern Research Station/Pacific Northwest Research Station/Pacific Southwest Research Stations. All States, NAICS 541330, 541360, 541620, and 541690, 2019 – Current, Prime: NovelE
- City of Tampa Professional Services IDIQ, 2018 – Current, Prime
- United States Department of Veteran’s Affairs – IDIQ Environmental Remediation Services, 2018-2023, Prime: ACT SAFE, LLC
- Greater Orlando Aviation Authority – Continuing Environmental Consulting Services, 2017-current, Prime: Intertek PSI
- City of Orlando – Continuing Environmental Consulting Services, 2019-current, Prime: Intertek PSI

## Acquisition Options

- Purchase Card (Micro-purchases)
- 8a Sole Source
- EDWOSB or WOSB Sole Source
- Blanket Purchase Agreements via 8a
- Blanket Purchase Agreements via WOSB

# Strategic Partnerships and Joint Ventures

- NovelE-QRI JV, 8(a), EDWOSB  
(DUNS 116930473, Cage 88KA2)
- PR&D-NovleE JV, 8(a), EDWOSB  
(DUNS 117605189, Cage 8NX15)
- QRI-NovleE JV, WOSB  
(DUNS 116758460, Cage 87S80)
- ACT-NovleE, 8(a), SDVOSB, WOSB  
(DUNS 116930473, Cage 90RY8)

 PR&D - NovelE JV



# Professional Certifications

State of Florida Licensed Professional Engineer and Professional Geologist

Florida Department of Environmental Protection (FDEP)

Petroleum Restoration Program (PRP) Qualified Contractor, 01418

State of Florida Licensed Water Well Contractor

Engineers Licensed in AL, DE, FL, GA, LA, MS, LA, TN, TX



## KEY PERSONNEL

NovelE team members include geologists, engineers, subcontractors, subconsultants, and vendors with a strong background in environmental consulting. NovelE encourages green engineering design and implementation for each project. The overall goal is to minimize the environmental impact of the cleanup activities at each stage of the project through modified life cycle assessment (LCA) or “cradle to grave” evaluations. NovelE's technical staff has worked in the environmental industry for an average of over 20 years.



### **Liza Grudin, PE, ME, ENV SP | Principal Engineer & Founder of NovelE**

Ms. Grudin founded NovelE in 2015 recognizing a need for innovative, high quality environmental engineering and consulting services. She has over 25 years of experience in the environmental field. As Project Manager and Engineer-of-Record, her experience includes large WUP and NPDES permits, NEPA EAs, remediation fate and transport modeling and design, implementation, and O&M, Statistical Analysis, ISO compliance, and environmental management system consulting at Federal, State, privately funded, and consent order sites for Fortune 500, federal, State, and local municipality clients. Liza is a licensed Professional Engineer in Alabama, Delaware, Florida, Georgia, Louisiana, Mississippi, New Jersey, and Texas. She is registered with the NCEES allowing her to easily obtain licenses by reciprocity as needed for client projects.

### **Randy Whitesell, PE | Environmental/Civil Engineer**



Randy Whitesell is a Civil Engineer with over 30 years of civil and environmental engineering, and construction experience. Mr. Whitesell has experience in hydrographic surveys, underwater assessment, underwater construction, and oversight. He is responsible for the design, implementation, construction, operation and maintenance of remediation systems utilizing bioremediation, chemical remediation, pump and treat, air sparging, soil vapor extraction, and dual phase extraction technologies. He provides engineering design, implementation, construction, and operation and maintenance of remediation systems in a broad array of lithologies. Randy provides senior oversight and project management for site assessments and remediation projects from initial field investigation through site closure. Other responsibilities include providing technical support, principal review, and guidance to the technical and professional staff. Mr. Whitesell has extensive site safety and health officer, quality control, and construction oversight experience with both vertical and horizontal construction.



### **George Maihack, PG | Principal Geologist**

Mr. Maihack is a hydrogeologist with over 30 years of environmental assessment and remediation experience. His knowledge base includes work on both the consulting and regulatory side of the FDEP PRP and State Cleanup Programs lending a unique perspective to client consulting and expediting project approvals.



### **Gregory L. Aumann | Project Geologist**

Mr. Aumann worked for AECOM for 19 years before coming on board at NovelE. Greg has worked on a variety of long-term projects including PD&E studies, Emergency Response and contamination assessment and remediation, AST/UST removal and installation, free product recovery, and bioassessment and ISM sampling. Greg is a certified Site Safety and Health Officer (SSHO). Our Founder, Liza Grudin, PE and Project Geologist, Greg Aumann, began their journey in the environmental field together in 1999.



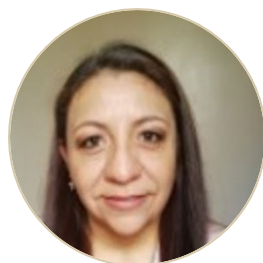
### **Ronald "Steve" Pitts | Remediation Specialist**

Mr. Pitts has over 25 years of experience pilot testing, dewatering, and providing technical expertise for the operation & maintenance (O&M) of remediation systems including equipment repair, electrical modifications, and remediation system optimization. Our Senior Field Specialist, Steve Pitts began working with our President in 2011 and was the first technical staff employee to join NovelE. Steve has worked on over 500 sites in his career aiding in his diagnostic skills.



### **David Haney | Environmental Specialist**

Mr. Haney is NovelE's Environmental Specialist with over 12 years of environmental sampling and archaeological experience. His varied experience includes stream conditioning index (SCI) evaluations combined with habitat assessment, surface water and groundwater sampling, surveying and correlation of GIS data, and stream flow and hydrological measurements. He has performed background research on project sites incorporating ecological information, as well as collection and categorization of artifacts and monitoring of construction projects within culturally sensitive areas.



### **Julia Salazar, EI | Project Engineer**

Ms. Salazar is a Civil Engineer with over 20 years of remediation and design experience with petroleum and chlorinated solvents, as well as emerging contaminants. She has both State of Florida and international environmental cleanup experience. Her big box project and contaminant experience includes her Dames & Moore/URS Corporation and Metcalf & Eddy/AECOM.

# PERFORMANCE HISTORY AT-A-GLANCE

## SECURE FACILITIES

- Naval Sea Systems Command Panama City (NAVSEA)
- Naval Air Station Whiting Field (NAS Whiting Field)
- United States Coast Guard Station, Fort Myers Beach, Florida
- Cape Canaveral Space Force Station
- Patrick Space Force Base
- Bay Pines VA Healthcare System
- BP Terminal, Port of Tampa
- Amoco Terminal, Port Tampa Bay
- Motiva Terminal, Port of Tampa
- Motiva Terminals, Port Everglades
- Common Areas (Fueling and Berthing Piers), Port Everglades
- Lockheed Martin, Orlando

## ARCHITECTURE AND ENGINEERING CLIENTELE

- ACT Safe
- AECOM
- Alliant Environmental Solutions
- Apex Companies
- ECT
- Environmental Assessments + Consulting (EAC)
- GHS Environmental
- H<sub>2</sub>O Environmental Services
- Intertek PSI
- MSE Group
- NOVA Environmental & Engineering
- NV5
- PACSCON GeoEnvironmental
- Petroleum Resources & Development (PR&D)
- SCS
- Woodard & Curran

## PUBLIC SECTOR CLIENTELE

- United States Army Corp of Engineers
  - United States Air Force
- Patrick Air Force Base 45<sup>th</sup> SW
  - United States Space Force
  - United States Coast Guard
    - United States Navy Civil Engineer Corp
- United States Department of Veteran's Affairs
- United States Department of Agriculture
  - Federal Emergency Management Agency
  - Florida Department of Environmental Protection
  - Florida Department of Transportation
- Florida Turnpike Enterprise
  - Lockheed Martin
  - Amtrak
- Orlando Utilities Commission
  - South Florida Water Management District (SFWMD)
  - St Johns River Water Management District (SJRWMD)
  - Southwest Florida Water Management District (SWFWMD)
  - Habitat for Humanity
- Hillsborough Area Transit Authority (HART)
- Tampa International Airport
  - City of Tallahassee
  - Leon County Solid Waste Authority
- Palm Beach County Solid Waste Authority
  - City of Homestead Public Services
- Duke Energy of Florida

# Capability Statement



NovelEsolutions  
410 S. Ware Boulevard, Suite 800  
Tampa, FL 33619

Phone: 239.220.4138  
info@NovelEsolutions.com

www.NovelEsolutions.com